



Anchor Wall Engineering, LLC
5959 Baker Road, Suite 390
Minnetonka, MN 55345

These graphic representations are intended for preliminary design purposes only and are not to be used for construction without the signature of a registered professional engineer.

©2008 Anchor Wall Engineering, LLC
® and ™ Anchor Wall Systems, Inc.

Drawn By: AWE

Date: 3/18/2008

Scale: 3/8"=1'-0"

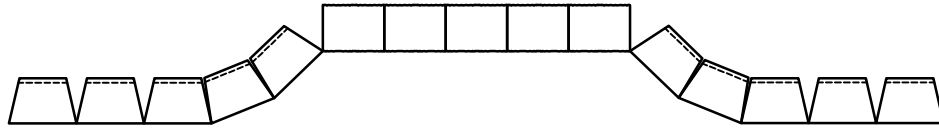
Drawing Title:

Highland Stone® Retaining Walls
Typical Stair Construction

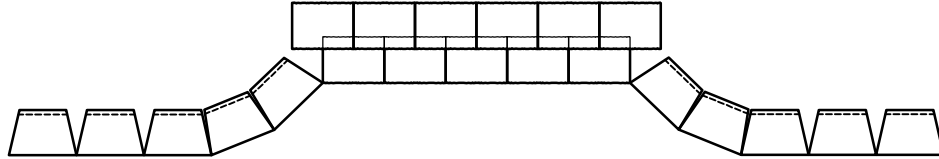
Project Information:

Typical Retaining Wall Details
www.anchorwall.com

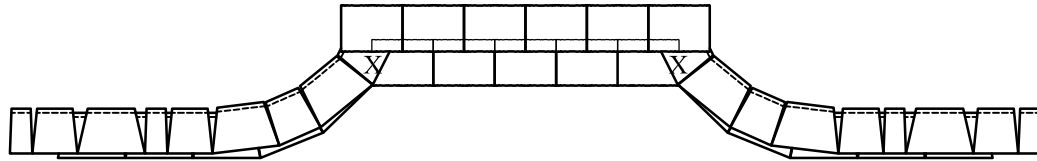
STEP 1 - ESTABLISH BASE COURSE, USING NORMAL CONSTRUCTION PROCEDURES AS SHOWN ON WALL PLAN.



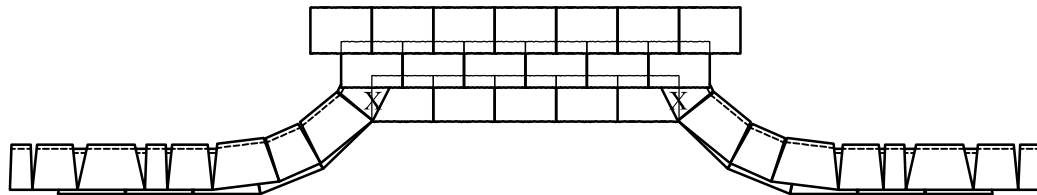
STEP 2 - ADD SECOND COURSE OF STEP UNITS, MAINTAINING RUNNING BOND. OVERLAP PREVIOUS COURSE OF STEP UNITS BY 2 INCHES AND AFFIX TO LOWER COURSE WITH A CONSTRUCTION-GRADE ADHESIVE.



STEP 3 - CONTINUE TO PLACE THE NEXT COURSE OF HIGHLAND STONE® UNITS ON THE WALL, MAINTAINING THE RUNNING BOND. CUT THE UNIT MARKED WITH "X" TO FIT, REMOVE THE REAR LIP OF THIS UNIT AND AFFIX WITH A CONSTRUCTION-GRADE ADHESIVE.



STEP 4 - PLACE THE NEXT ROW OF STEP UNITS. OVERLAP THE PREVIOUS COURSE BY 2 INCHES AND AFFIX WITH A CONSTRUCTION-GRADE ADHESIVE. EXTEND THIS COURSE BEHIND THE WALL SYSTEM AS NEEDED.



STEP 5 - CONTINUE STEPS 3 AND 4 UNTIL THE DESIRED WALL HEIGHT IS REACHED. CUT THE BLOCK SHOWN AS "X", REMOVE THE REAR LIPS AND AFFIX THE BLOCK WITH A CONSTRUCTION-GRADE ADHESIVE FOR EACH COURSE CONSTRUCTED.

