



**ANCHOR**<sup>TM</sup>  
**BUILD SOMETHING BEAUTIFUL**

Anchor Wall Engineering, LLC  
 5959 Baker Road, Suite 390  
 Minnetonka, MN 55345

These graphic representations are intended for preliminary design purposes only and are not to be used for construction without the signature of a registered professional engineer.

©2008 Anchor Wall Engineering, LLC  
 ® and 7M Anchor Wall Systems, Inc.

Drawn By: AWE

Date: 3/18/2008

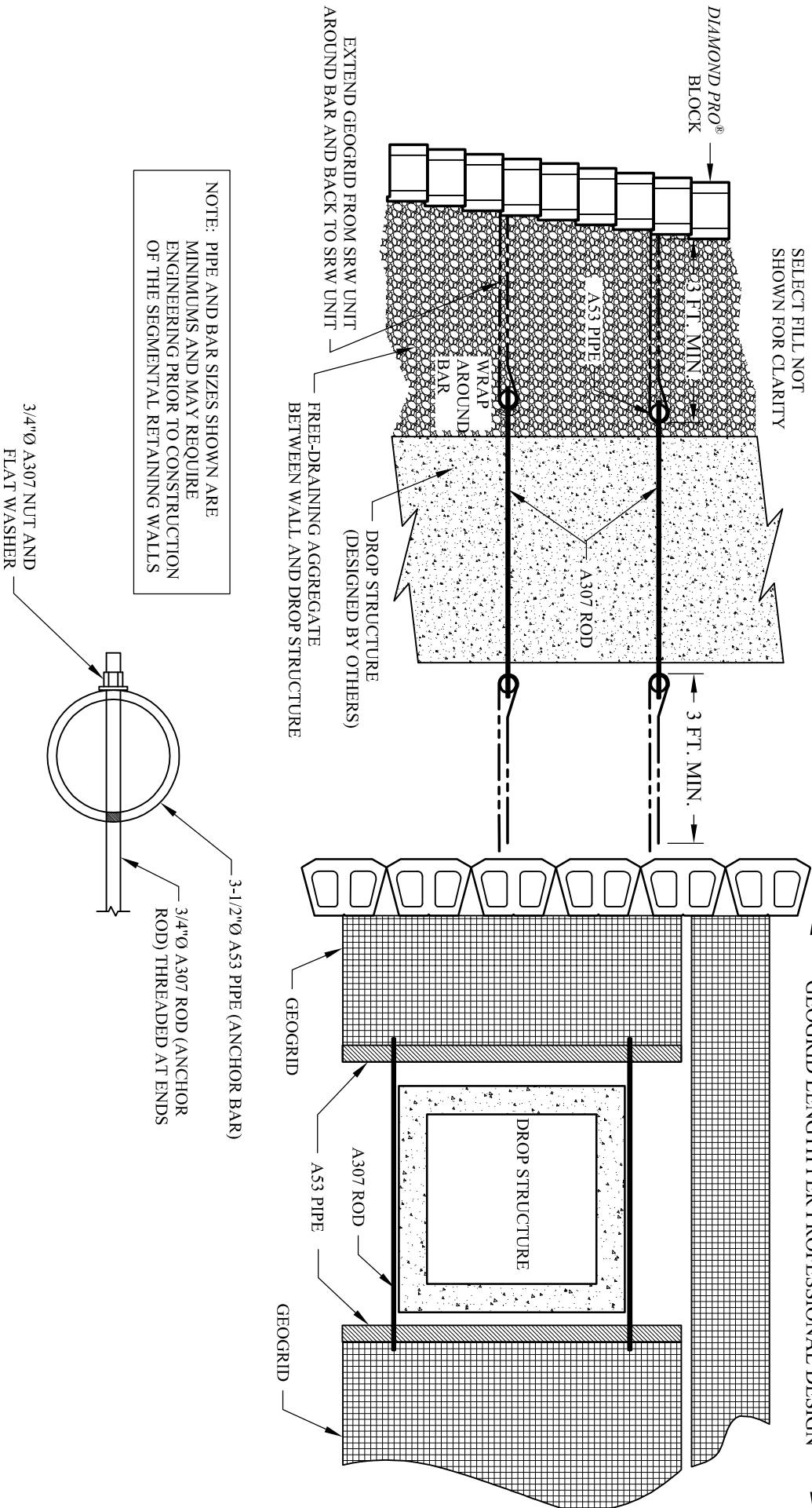
Scale: 3/8"=1'-0"

Drawing Title:

**Diamond Pro<sup>®</sup> Retaining Wall System**  
**Typical Drop Structure Detail**

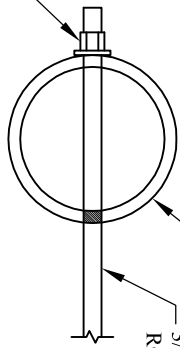
Project Information:

Typical Retaining Wall Details  
 www.anchorwall.com



NOTE: PIPE AND BAR SIZES SHOWN ARE MINIMUMS AND MAY REQUIRE ENGINEERING PRIOR TO CONSTRUCTION OF THE SEGMENTAL RETAINING WALLS

3/4"Ø A307 NUT AND FLAT WASHER



3-1/2"Ø A53 PIPE (ANCHOR BAR)

3/4"Ø A307 ROD (ANCHOR ROD) THREADED AT ENDS

3-1/2"Ø A53 PIPE (ANCHOR BAR)

A307 ROD

A53 PIPE

GEOGRID

DROP STRUCTURE

← GEOGRID LENGTH PER PROFESSIONAL DESIGN →

SELECT FILL NOT SHOWN FOR CLARITY

EXTEND GEOGRID FROM SRW UNIT AROUND BAR AND BACK TO SRW UNIT

FREE-DRAINING AGGREGATE BETWEEN WALL AND DROP STRUCTURE

DROP STRUCTURE (DESIGNED BY OTHERS)

WRAP AROUND BAR

A53 PIPE

3 FT. MIN.

DIAMOND PRO<sup>®</sup> BLOCK

3 FT. MIN.