



Anchor Wall Engineering, LLC
 5959 Baker Road, Suite 390
 Minnetonka, MN 55345

These graphic representations are intended for preliminary design purposes only and are not to be used for construction without the signature of a registered professional engineer.

©2008 Anchor Wall Engineering, LLC
 ® and ™ Anchor Wall Systems, Inc.

Drawn By: AWE

Date: 3/18/2008

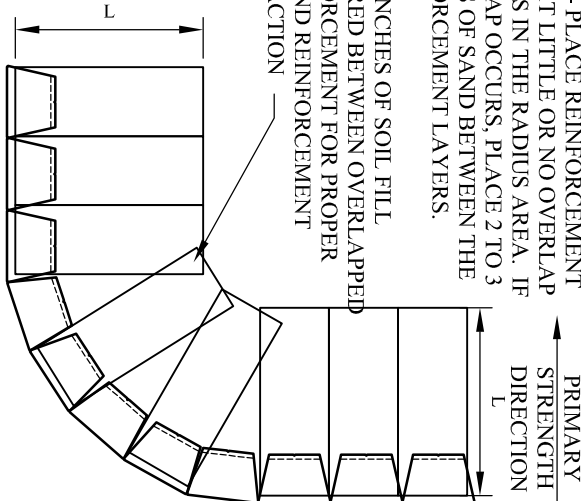
Scale: 1/4"=1'-0"

Drawing Title:

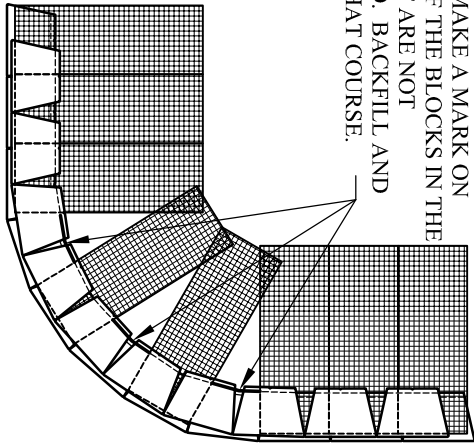
Diamond Pro[®] Retaining Wall System
Outside Curve Details

Project Information:
 Typical Retaining Wall Details
 www.anchorwall.com

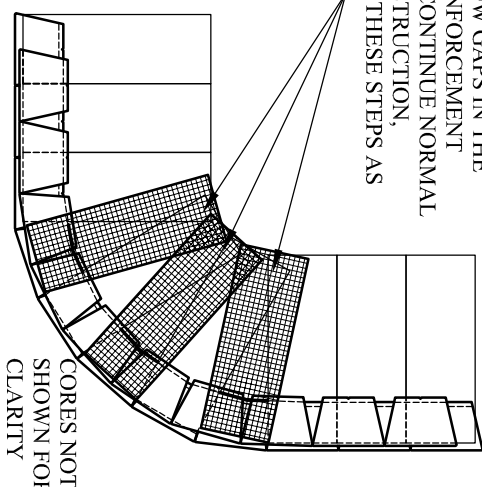
STEP 1 - PLACE REINFORCEMENT
 SO THAT LITTLE OR NO OVERLAP OCCURS IN THE RADIUS AREA. IF OVERLAP OCCURS, PLACE 2 TO 3 INCHES OF SAND BETWEEN THE REINFORCEMENT LAYERS.
 2 TO 3 INCHES OF SOIL FILL REQUIRED BETWEEN OVERLAPPED REINFORCEMENT FOR PROPER SOIL AND REINFORCEMENT INTERACTION



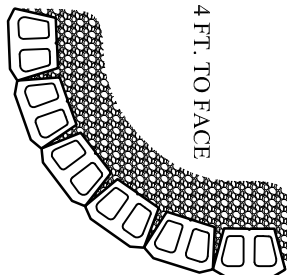
STEP 2: LAY THE NEXT COURSE OF BLOCK. MAKE A MARK ON THE BACK OF THE BLOCKS IN THE AREAS THAT ARE NOT REINFORCED, BACKFILL AND COMPACT THAT COURSE.



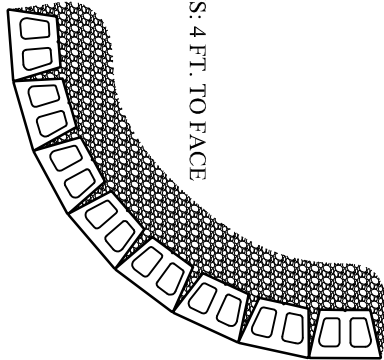
STEP 3: PLACE REINFORCEMENT
 IN THE AREAS WHERE THE MARKS SHOW GAPS IN THE LOWER REINFORCEMENT PATTERN. CONTINUE NORMAL WALL CONSTRUCTION, REPEATING THESE STEPS AS NEEDED



BEVELED UNITS
 MINIMUM RADIUS: 4 FT. TO FACE



STRAIGHT UNITS
 MINIMUM RADIUS: 4 FT. TO FACE



CORES NOT SHOWN FOR CLARITY